

LEGEND

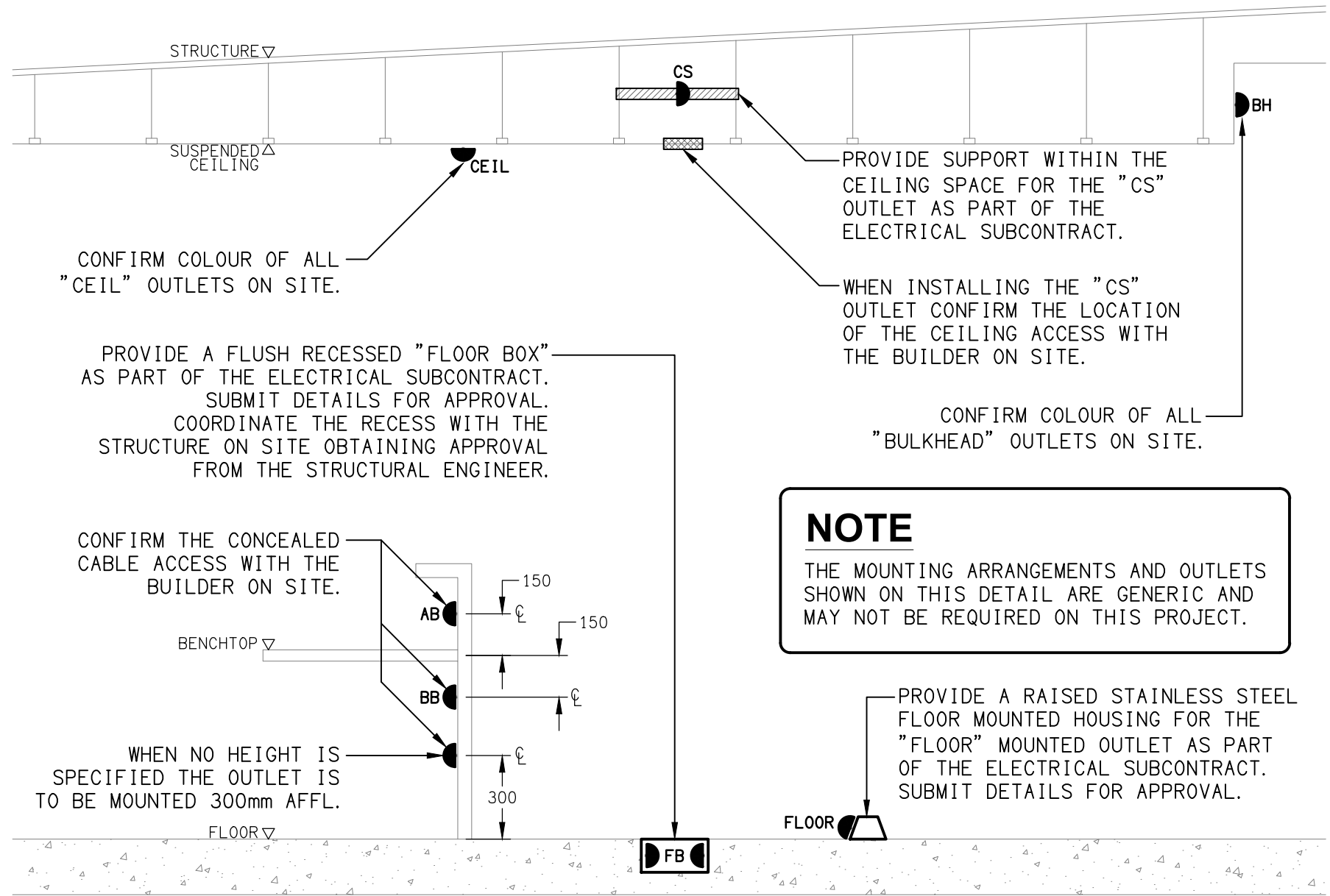
	ELECTRICAL SERVICES SWITCHBOARD.
	SWITCHBOARD / CONTROL PANEL NOT PROVIDED AS PART OF THE ELECTRICAL SUBCONTRACT.
	SINGLE POWER OUTLET.
	DOUBLE POWER OUTLET.
	DOUBLE POWER C/W INTEGRAL USB CHARGERS.
	SPECIAL PURPOSE POWER OUTLET.
	SINGLE PHASE ISOLATOR.
	THREE PHASE ISOLATOR.
	SIGNAGE OUTLET.
	CABLE TRAY / LADDER, TYPE AS NOTED.
	CONDUIT ROUTE.
	CONDUIT ACCESS POINT.
	EXISTING ELECTRICAL POWER PIT.
	HAND DRYER CONNECTION.
	LIGHTING PRESENCE DETECTOR SWITCH.
	LIGHTING CONTROL SWITCH PANEL, TYPE AS NOTED.
	ONE-WAY LIGHT SWITCH.
	TWO-WAY LIGHT SWITCH.
	CEILING FAN SPEED CONTROLLER (FSC).
	CIRCUIT LINE.
	SWITCH LINE.
	POWER CIRCUIT DESIGNATION. DENOTES DB AND CIRCUIT.
	LIGHTING CONTROL CHANNEL REFERENCE.
	ELECTRICAL EQUIPMENT AS NOTED.
	RJ45 COMMUNICATIONS OUTLET.
	RJ45 COMMUNICATIONS OUTLET C/W RECESS KIT.
	CCTV OUTLET.
	LIFT INTERFACE MODULE.
	ACCESS CONTROL GATE INTERFACE.
	ACCESS CONTROL CARD READER.
	ACCESS CONTROL DOOR ELECTRIC STRIKE.
	SECURITY ARMING / DISARMING KEY PANEL.
	SECURITY DIRECTIONAL MOTION DETECTOR.
	SECURITY 360DEG CEILING MOUNTED MOTION DETECTOR.
	SECURITY PRO-TRI-TECH DIRECTIONAL MOTION DETECTOR.
	SECURITY REED SWITCH.
	SECURITY WIRELESS LOCK.
	FIRE MIMIC PANEL.
	PIEZO SIREN.
	RADIO MICROPHONE ANTENNA.

LEGEND

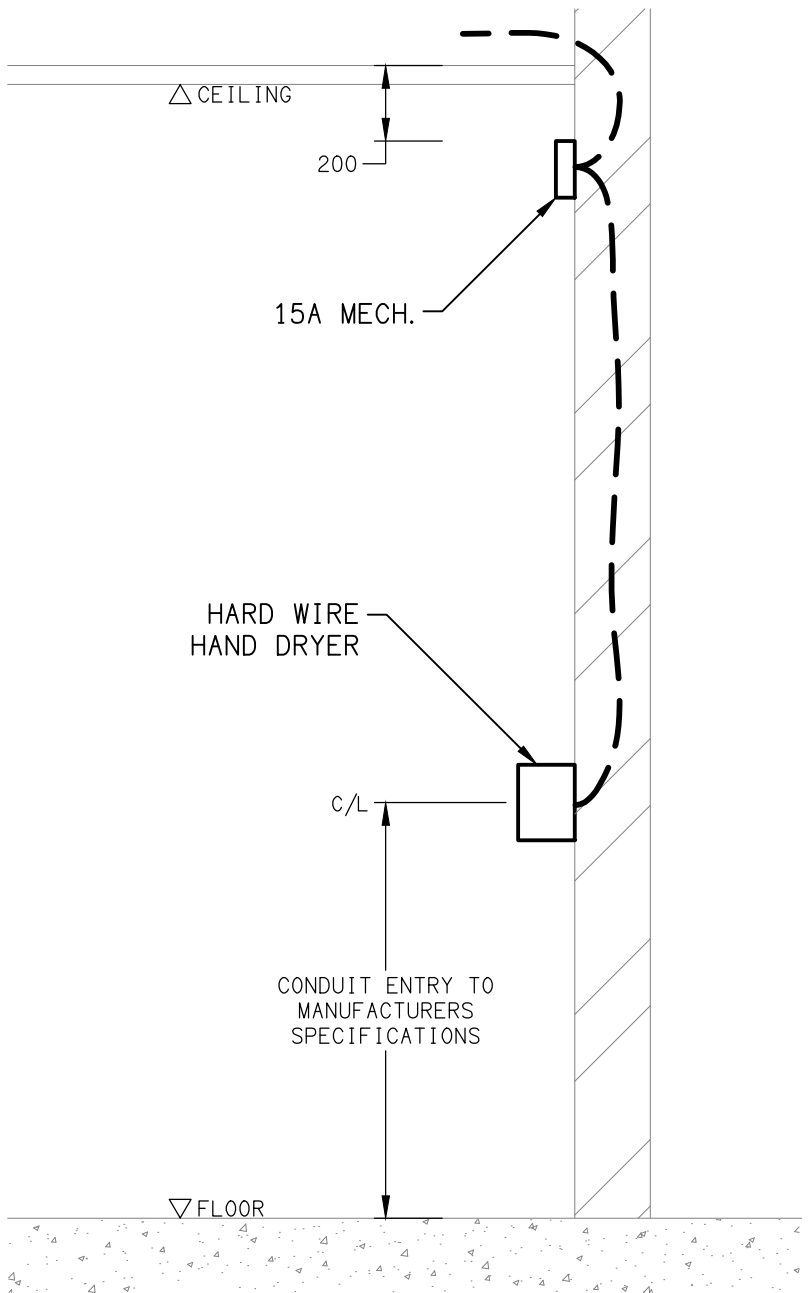
	HORN / HOOTER.
	RECESSED SPEAKER, UNLESS NOTED OTHERWISE.
	FIRE SMOKE DETECTOR.
	FIRE EVACUATION SPEAKER
	FIRE EVACUATION HORN.
	FIRE INDICATOR PANEL, TYPE AS NOTED.
	FUSE.
	SINGLE PHASE.
	THREE PHASE.
	CURRENT TRANSFORMER C/W REMOVABLE LINK.
	FUSE LINK.
	COMBINED FUSE SWITCH.
	CIRCUIT BREAKER.
	ISOLATOR.
	RESIDUAL CURRENT DEVICE.
	CONTACTOR - NORMALLY OPEN.
	CONTACTOR - NORMALLY CLOSED.
	REFER TO DETAIL NOTED FOR THE AREA SHOWN HATCHED. ADDITIONAL OUTLETS & FITTINGS MAY BE SHOWN ON DETAIL.
	SM: DENOTES OUTLET / FITTING TO BE SURFACE MOUNTED.
	E1: GENERAL LED EMERGENCY LIGHT.
	EX: EMERGENCY LED EXIT LIGHT.
	EX WP: WEATHERPROOF EMERGENCY LED EXIT LIGHT.
	Lx: LIGHT FITTING C/W NON-MAINTAINED EMERGENCY BATTERY PACK. TYPE AS NOTED.
	L1: 3300 LUMEN 600 x 600 T-BAR FLAT PLATE FITTING.
	L3: RECESSED DOWNLIGHT.
	L4: RECESSED DOWNLIGHT.
	L8: RECESSED DOWNLIGHT.
	L13: LED STRIP LIGHT MOUNTED UNDER THE OVERHEAD CUPBOARD.
	L17: 1200 LONG SURFACE MOUNTED IP66 BATTEN C/W INTEGRAL SENSOR.
	L23: 1200 LONG SURFACE MOUNTED IP56 BATTEN.
	L28: TWO ADJUSTABLE FLOOD LIGHTS MOUNTED ON A 12M HIGH POLE.
	L29: RECESSED LED EXTRUSION LIGHT. LENGTHS AS NOTED.
	L30: RECESSED LED EXTRUSION LIGHT. LENGTHS AS NOTED.
	L31: RECESSED LED EXTRUSION LIGHT. LENGTHS AS NOTED.
	L32: SURFACE MOUNTED LED EXTRUSION LIGHT.
	L33: SURFACE MOUNTED LED EXTRUSION LIGHT.
	L34: 600 LONG WALL MOUNTED BATTEN.
	L35: ADJUSTABLE POLE MOUNTED FLOOD LIGHT.
	L36: EXTERNAL DOWNLIGHT.
	L37: AMENITY WALL LIGHT.

LEGEND

	S1: SALTO GATEWAY CAT-6 PLUG FROM THE COMMUNICATIONS RACK AS NOTED.
	S2: SALTO NODE CAT-6 PLUG C/W INTERCONNECTING CABLE.
	S3: NO LONGER REQUIRED.
	SECURITY BLUE STROBE SIREN.
	ROLLER SHUTTER DOOR REED SWITCH.
	EVACUATION VISUAL ALARM DEVICE / STROBE.
	NEW POWER AND COMMUNICATIONS PITS.



DETAIL
TYPICAL OUTLET MOUNTINGS
NOT TO SCALE



DETAIL
HAND DRYER CONNECTION
NOT TO SCALE